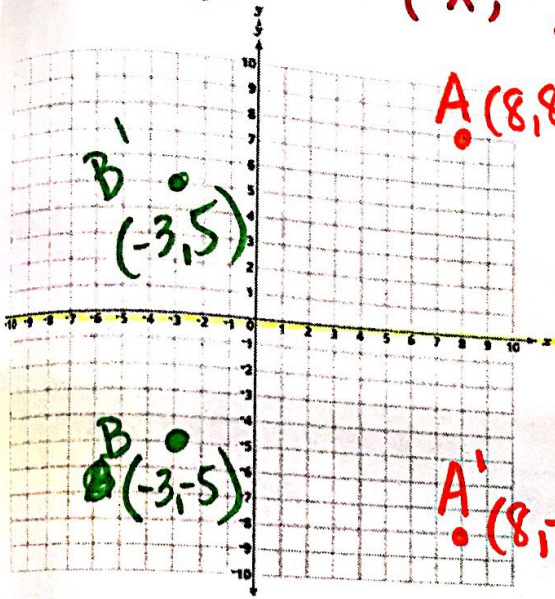


# Notes: Reflection Rules

Line of Reflection:  $x$  - axis

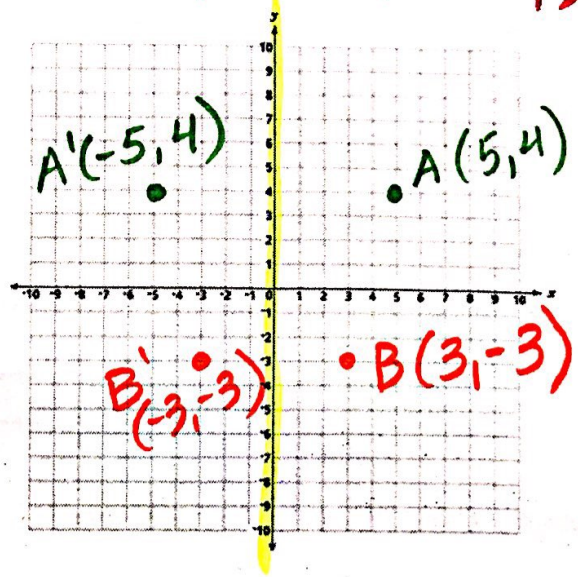
$$(x, y) \rightarrow (x, -y)$$

$A(8, 8)$



Line of Reflection:  $y$  - axis

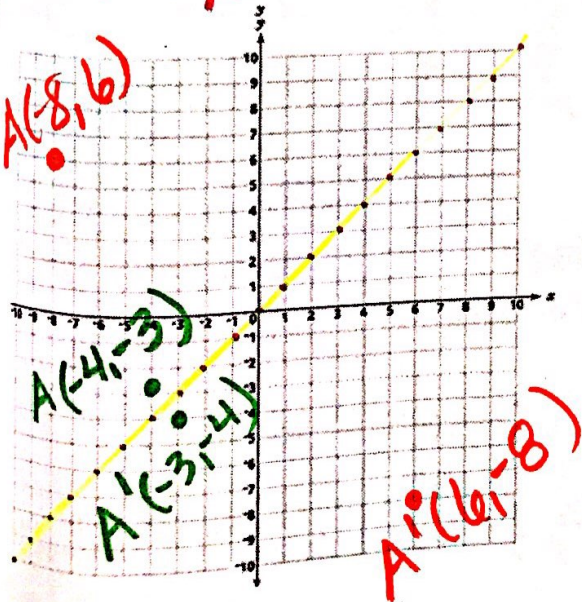
$$(x, y) \rightarrow (-x, y)$$



Line of Reflection:  $y = x$

$$(x, y) \rightarrow (y, x)$$

$A(8, 6)$



Line of Reflection:  $y = -x$

$$(x, y) \rightarrow (-y, -x)$$

