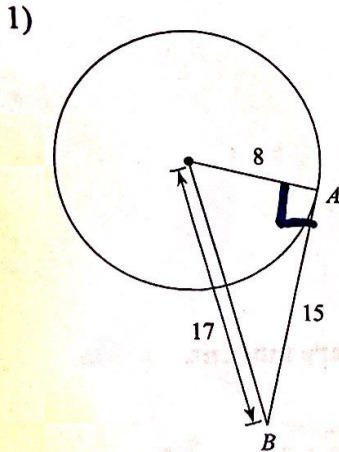


Tangent Lines Review

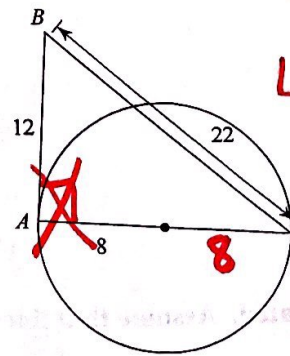
Determine if line AB is tangent to the circle.



$$8^2 + 15^2 = 17^2$$

$$289 = 289$$

Tangent

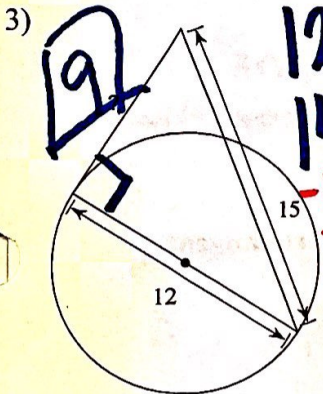


$$16^2 + 12^2 = 22^2$$

$$400 \neq 484$$

not
Tangent

Find the segment length indicated. Assume that lines which appear to be tangent are tangent.

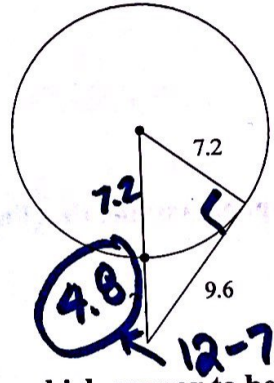


$$12^2 + x^2 = 15^2$$

$$144 + x^2 = 225$$

$$x^2 = 81$$

$$x = 9$$



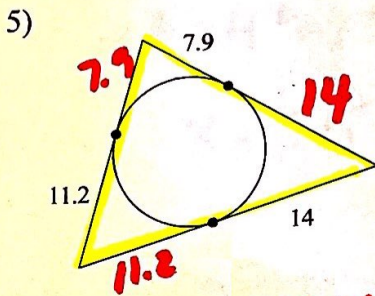
$$7.2^2 + 9.6^2 = x^2$$

$$51.84 + 92.16 = x^2$$

$$\sqrt{144} = \sqrt{x^2}$$

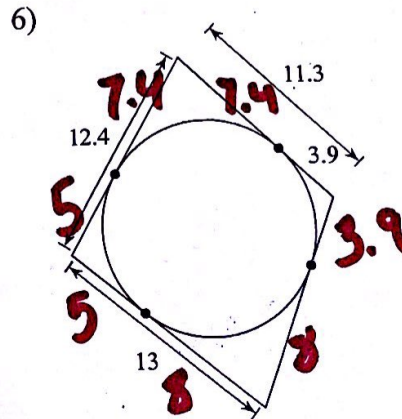
$$12 = x$$

Find the perimeter of each polygon. Assume that lines which appear to be tangent are tangent.

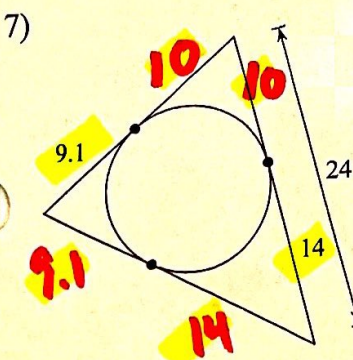


$$P = 66.2$$

$$7.9 + 7.9 + 11.2 + 11.2 + 14 + 14$$



$$P = 48.6$$



$$P = 66.2$$