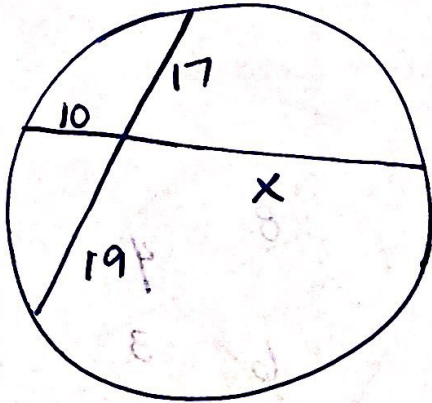


$$19x = 21 \cdot 25$$

$$\frac{19x}{19} = \frac{525}{19}$$

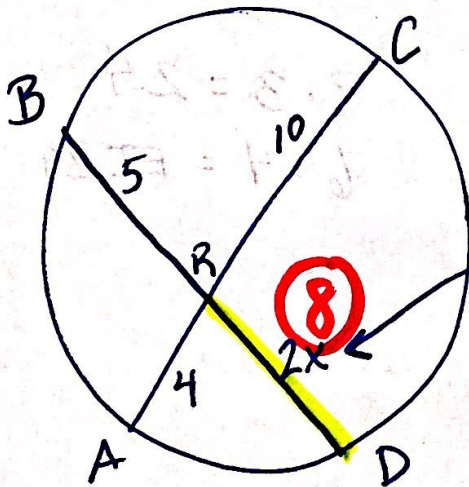
$$x = 27.6$$



$$10x = 19 \cdot 17$$

$$\frac{10x}{10} = \frac{323}{10}$$

$$x = 32.3$$

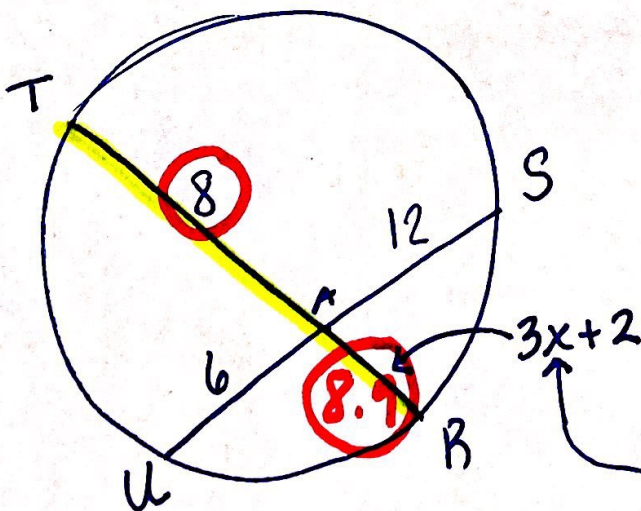


Find  $RD = 8$

$$5 \cdot 2x = 4 \cdot 10$$

$$\frac{10x}{10} = \frac{40}{10}$$

$$x = 4$$



Find  $TR = 8 + 8.9 = 16.9$

$$8(3x+2) = 6 \cdot 12$$

$$24x + 16 = 72$$

$$\frac{24x}{24} = \frac{56}{24}$$

$$x = 2.3$$